

# **1. Introduction**

The Government of Pakistan (GoP) through the Ministry of Energy (MoE) – Power Division (PD), Peshawar Electric Supply Company (PESCO), is implementing the Electricity Distribution Efficiency Improvement Project (EDEIP) (the project). Under the project, the MoE – PD seeks to undertake power sector reforms while PESCO intend to undertake priority development works to strengthen their respective electricity distribution networks to ensure a reliable supply of electricity to their consume. Peshawar Electric Supply Company (PESCO), incorporated as a Public Limited Company on 23<sup>rd</sup> April 1998, is responsible for the delivery of electricity to its consumers of all civil districts of Khyber Pakhtunkhwa spanning a service area of 74,521 sq-km. The company's major objectives include enshrining g uninterrupted and stable power supply to all its customers along with state-of-the-art customer care and establishing and operating reliable electricity distribution networks.

This assessment report has been prepared for the subproject under EDEIP to replace bare aluminum conductor with aerial bundled cable (ABC) cable on low-tension (LT) Lines emanating from 6,250 Distribution transformers involving 479.834 km LT lines of 60 11kV feeders in two circles of PESCO having very high percentage of losses. Number of feeders selected for replacement of bare aluminum conductor with ABC cable in Peshawar Circle is 43, Khyber Circle 17.

## Chapter No.02

### 2.1. EDEIP Overview

EDEIP aims to support PESCO by providing financial and technical support for investments to modernize its electricity distribution networks and institutional development resulting in improved operational efficiency in the sector and reliable supply to the consumers. It will help in the (i) physical strengthening of distribution networks; (ii) deployment of modern equipment, technology, and information systems; and (iii) providing technical assistance, studies, consultancies, and management support. PESCO subprojects under EDEIP comprised of the following

1. Capacitor banks
2. Upgrading 132-kV bus bars at 20 grid stations
3. Extension of four grid stations
4. Augmentation of 12 grid stations
5. Re-conductoring of four transmission lines with a total length of 49 kilometers (km)
6. Installation/improvement of 130 high tension (HT) feeders
7. Installation/improvement of low tension (LT) feeders
8. Installation of transformer monitoring system
9. Installation of 65,000 smart meters
10. Aerial bundle cable (ABC) for 60 feeders.

### 2.2. Subproject: AERIAL BUNDLED CABLE (ABC)

Aerial Bundled Cable (ABC) is one of the subprojects under EDEIP. It is a very novel concept for overhead power distribution. When compared to the conventional bare conductor overhead distribution system, ABC provides higher safety and reliability, lower power losses, and ultimate system economy by reducing installation, maintenance, and operative cost. This system is ideal for rural distribution and especially attractive for installation in difficult terrains such as high-loss areas (theft areas), hilly areas, forest areas, coastal areas, etc.

ABC is also considered to be the best choice for power distribution in congested urban areas with narrow lanes. In developing urban complexes, ABC is the better choice because of the flexibility for rerouting as demanded by changes in the urban development plan.

### 2.3. OBJECTIVES AND BENEFITS OF THE SUBPROJECT

Reliable supply of power to industrial, agricultural, commercial, and domestic consumers is an objective for development and production in the sector which owes a significant contribution in the economic growth of the country, alleviating poverty. An average increase of 4% per annum in power demand in the area during the next 15 years is anticipated.

To cope with the increasing demand and eliminate pilferage of electricity, the replacement of bare aluminum conductors with ABC Cable has been planned which will not only improve the power supply position in the area but will also significantly reduce losses, thus increasing the revenue.

The benefits associated with the proposed project include:-

- i. Provision of a more reliable supply of electricity to the consumers.
- ii. Installation of ABC will force the consumers, using electricity by direct hooking, to come in the network by legal means, thereby increasing the bonafide consumers of PESCO.
- iii. Revenue enhancement through reduction in technical losses, pilferage, outages, and reduction in O&M cost, enhanced equipment's life, improved overall performance and profitability, less burning of transformers.
- iv. Overall economic growth and the ongoing investments in the primary network have necessitated investments in the secondary grid system and the distribution system. This is essential as both of these systems are at present unable to adequately deliver the system peak and therefore will be severely constrained to deliver the increased power demand in the immediate future.
- v. The cumulative effect of the implementation of the project works will bring increased/additional energy, improvements in system stability, reliability and efficiency, reduction in technical and other losses.

Quantifiable and non-quantifiable benefits of the projects are as follows:

- i. Socio economic uplifts of the community such as improved production, incomes and market activities.
- ii. Theft Control by Elimination of direct hooks, Make stealing electricity more difficult.
- iii. Safety of Public and Employees
- iv. More Protection to Distribution Transformers from short circuits on LT side

- v. Relatively immune to short circuits caused by external forces (high winds, fallen branches). Unless they scratch the insulation.
- vi. Can stand close to trees/buildings, and touch will not produce sparks.
- vii. There is almost no need to trim trees.
- viii. The installation is simpler and does not require crossbars and insulators.
- ix. Convenient installation and hanging line, low labor intensity, fewer construction resources required.

## 2.6. List of Feeders to be Converted to ABC

As stated above it is planned to replace bare aluminum LT conductor with ABC Cable. Initially, 60 feeders of 2 operation circles having high percentage of losses ranging from 56.39 % to 96.39% have been selected for installation of ABC Cable on LT lines as this high percentage of losses is mainly attributed to direct connection through illegal connections by the inhabitants of the area. Circle wise feeders for the replacement of bare aluminum conductor are as follows;

| S.No | Division   | Subdivision  | Feeder Name   | No. of Consumers | Project Baseline   |
|------|------------|--------------|---------------|------------------|--|
| 1    | City Rural | Nishtar abad | Islamabad     | 3056             | Urban Residential set ups with streets                         |
| 2    |            | Nishtar abad | Nishtarabad-2 | 1028             | Urban Residential set ups with streets                         |
| 3    |            | Faqirabad    | Zaryab        | 4393             | Urban Residential set ups with streets with commercial markets |
| 4    |            | Rahman baba  | Phando baba   | 1333             | Semi rural residential set ups                                 |
| 5    |            | Rahman baba  | Baghbanan     | 3687             | Semi rural residential set ups                                 |
| 6    |            | Lala         | Wadpaga-1     | 4585             | Semi rural residential set ups                                 |
| 7    |            | Lala         | Wadpagga-2    | 3641             | Semi rural residential set ups                                 |
| 8    |            | Lala         | Lala          | 2925             | Semi rural residential set ups                                 |
| 9    |            | Sethi town   | Pakha ghulam  | 4693             | Semi rural residential set ups                                 |

| S.No | Division  | Subdivision   | Feeder Name     | No. of Consumers | Project Baseline   |
|------|-----------|---------------|-----------------|------------------|--|
| 10   |           | Sethi town    | New Gul Abad    | 3855             | Urban Residential set up                                 |
| 11   |           | Sethi town    | Sethi Town      | 5129             | Urban Residential set up with commercial markets         |
| 12   |           | Sethi town    | Sarbiland Pura  | 2702             | Urban residential set up                                 |
| 13   |           | Sethi town    | Dalazak         | 5191             | Urban residential set up with commercial markets         |
| 14   | City      | Rashid Ghari  | Rashid Ghari    | 5533             | Urban residential set up with markets                    |
| 15   |           | Phandu        | Chairman Daftar | 3956             | Urban residential set up with markets                    |
| 16   | Cantt     | University-I  | Malkandher      | 4458             | Semi rural residential set ups                           |
| 17   |           | University-II | G.abad          | 4497             | Urban residential set ups                                |
| 18   |           | University-II | Rahatabad       | 2673             | Urban residential set ups                                |
| 19   |           | Kohat road    | Kohat Road      | 2734             | Urban residential set ups with commercial markets        |
| 20   |           | Kohat road    | New road kohat  | 2935             | Semi rural residential set ups with pockets of agri-land |
| 21   | Charsadda | Charsadda     | Charsadda-IV    | 6049             | rural residential set ups with pockets of agri-land      |
| 22   |           | Charsadda     | Charsadda-1     | 5203             | Rural residential set ups with pockets of agri-land      |
| 23   |           | Charsadda     | Charsadda-3     | 4177             | rural residential set ups with pockets of agri-land      |

| S.No | Division  | Subdivision     | Feeder Name     | No. of Consumers | Project Baseline                                    |
|------|-----------|-----------------|-----------------|------------------|---|
| 24   |           | Sardheri        | Dargai          | 4891             | rural residential set ups with pockets of agri-land |
| 25   |           | Sardheri        | Sardheri        | 5524             | rural residential set ups with pockets of agri-land |
| 26   |           | Utmanzai        | Rajjar          | 5781             | rural residential set ups with pockets of agri-land |
| 27   |           | Nisatta (Rural) | Prang           | 4251             | rural residential set ups with pockets of agri-land |
| 28   | Shabqadar | Tangi           | Barazai         | 5276             | Rural residential set ups                           |
| 29   |           | Tangi           | Tangi Nusratzai | 3955             | rural residential set ups with pockets of agri-land |
| 30   |           | Matta           | Katozai-2       | 1529             | rural residential set ups with pockets of agri-land |
| 31   |           | Matta           | Moran Koruna    | 1759             | rural residential set ups with pockets of agri-land |
| 32   |           | Doaba           | Pir Qilla       | 4035             | rural residential set ups with pockets of agri-land |
| 33   |           | Shabqadar       | Shabqadar Fort  | 3206             | rural residential set ups with pockets of agri-land |
| 34   | Rural     | Warsak-I        | Mathra-I        | 2687             | rural residential set ups with pockets of agri-land |
| 35   |           | Daud zai        | Nishat-I        | 4609             | rural residential set ups with                      |

| S.No | Division       | Subdivision | Feeder Name | No. of Consumers | Project Baseline                                    |
|------|----------------|-------------|-------------|------------------|---|
|      |                |             |             |                  | pockets of agri-land                                |
| 36   |                | Daud zai    | Nishat-II   | 2315             | rural residential set ups with pockets of agri-land |
| 37   |                | Gulbela     | Daud zai-I  | 6070             | rural residential set ups with pockets of agri-land |
| 38   |                | Gulbela     | Khazana-2   | 5755             | rural residential set ups with pockets of agri-land |
| 39   |                | Gulbela     | Khazana     | 3428             | rural residential set ups with pockets of agri-land |
| 40   |                | Warsak-II   | Kaniza      | 2195             | rural residential set ups with pockets of agri-land |
| 41   |                | Warsak-II   | Regi        | 1579             | rural residential set ups with pockets of agri-land |
| 42   |                | Warsak-II   | Pajagi      | 4983             | rural residential set ups with pockets of agri-land |
| 43   |                | Naguman     | Daudzai-II  | 4866             | rural residential set ups with pockets of agri-land |
| 44   | Khyber         | Deh Bahadar | Sheikhan    | 1666             | rural residential set ups with pockets of agri-land |
| 45   | NSR City No. 2 | Pabbi-III   | P.S.O       | 4395             | rural residential set ups with pockets of agri-land |
| 46   |                | Pabbi-III   | Taru Jabba  | 4031             | rural residential set ups with                      |

| S.No | Division    | Subdivision    | Feeder Name   | No. of Consumers | Project Baseline  |
|------|-------------|----------------|---------------|------------------|---|
|      |             |                |               |                  | pockets of agri-land  |
| 47   |             | Pabbi-III      | Akbar Pura    | 5309             | rural residential set ups with pockets of agri-land                               |
| 48   |             | Pabbi-III      | Tarnab        | 4474             | rural residential set ups with pockets of agri-land                               |
| 49   |             | Pabbi-III      | Scarp-I       | 4285             | rural residential set ups with pockets of agri-land                               |
| 50   | Kohat       | Kotal Town     | Eid Gah Kohat | 1158             |   |
| 51   | Kohat Rural | Rural          | Hangu Road    | 4220             | Rural mountainous residential set up with barren land                             |
| 52   |             | Rural          | Alizai-1      | 3431             | Located on main road non productive rain fed fields few pockets of Guava orchards |
| 53   |             | Rural          | Alizai-2      | 2613             | Located on main road non productive rain fed fields few pockets of Guava orchards |
| 54   |             | Rural          | Barh          | 3705             | Village type residential set up mostly barren land                                |
| 55   |             | Rural          | O.T.S         | 4071             | Urban city type area with streets   |
| 56   |             | Rural          | Gamgol Sharif | 1900             | Urban + rural set ups with pocket agri-land                                       |
| 57   |             | Kohat Urban-II | City-4        | 4493             | Main city commercial + residential  |



| S.No | Division | Subdivision    | Feeder Name | No. of Consumers | Project Baseline                                |
|------|----------|----------------|-------------|------------------|---|
| 58   |          | Kohat Urban-II | S. Factory  | 5265             | Semi- urban residential set up                  |
| 59   |          | Kohat Urban-II | Tappi       | 2844             | Complete rural residential set up rain fed area |
| 60   |          | Kohat Urban-II | Jarma       | 2385             | Complete rural residential set up rain fed area |
|      |          |                |             | <b>227372</b>    |   |

Aerial bundle cabling (ABC) installation typically involves several activities,

1. Site survey: The installation team first carries out a site survey to assess the installation site and determine the feasibility of ABC installation.
2. Design and planning: Based on the site survey, the team designs the ABC system and plans the installation process, including the location of poles, anchors, and cable runs. In this particular package PESCO will replace the existing bare conductor with ABC, therefore, the location of poles, anchors, and cable runs already in place.
3. Pole and anchor installation: The installation team installs the poles and anchors required to support the ABC system, as explained in the preceding paras. In this particular package PESCO will replace the existing bare conductor with ABC, therefore, the location of poles, anchors, and cable runs already in place.
4. Cable pulling: The ABC cable is pulled between poles using pulling equipment such as winches and pulleys.
5. Cable termination: The cable ends are terminated with connectors and insulators, and the necessary clamps and hardware are installed to secure the cable.
6. Testing and commissioning: After the cable installation is complete, the team tests the system to ensure that it is functioning properly and safely.
7. Subsequently, bare conductor (LT) line dismantled and dispatched to the store for further necessary action(auction/reuse).
8. Maintenance and repair: Finally, the team will carry out periodic maintenance and repairs as needed to ensure the system's continued operation and longevity.
9. Generically, it involves

## Installation testing and Commissioning of ABC Cable

- a) Awarding the contract.
- b) Procurement of cable and other accessories.
- c) Isolating the relevant LT feeders
- d) Removing the LT Bare conductor
- e) Laying of the insulated a cable on the existing poles.
- f) Installation accessories.
- g) Putting the LT feeder back into the operation.
- h) ABC installation requires careful planning, attention to detail, and adherence to safety standards to ensure a successful installation that provides reliable and efficient power transmission.

## Chapter No. 03

### Area Profile

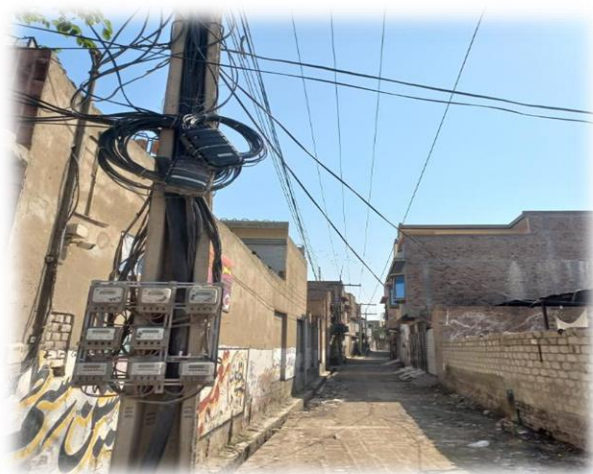
The profile of the area for the proposed ABC cabling work depicting Division, S/Division and Feeder name are furnished as under.

1. **Division:** City Rural

**S/Division:** Nishtar abad

**Feeder:** Islamabad

Nishtarabad also spells as Nishtarabad is a residential neighborhood in Peshawar city of Khyber Pakhtunkhwa province of Pakistan. Its location falls in the area known as Lahori, which comes under Union Council # 14 and has a catchment population of 14175. This Feeder is in the urban area of Peshawar city emanating from the 132 KV City Grid Station. The total Consumers on the Feeder are 3056. The area mainly consists of residential and commercial setups with streets. The major professions of the people are local small-level businesses, shopkeepers, Government, and private employment, and daily wagers(Masons, carpenters, black smiths, cobblers). The law-and-order situation in the right of way (RoW) of the feeder is normal (no civil unrest or criminal activities reported).



2. **Division:** City Rural

**S/Division:** Nishtar abad

**Feeder:** Nishtar abad 2

Nishtarabad also spells as Nishtarabad is a residential neighborhood in Peshawar city of Khyber Pakhtunkhwa province of Pakistan. Its exact location falls in the area known as Lahori, comes PESCO EDEIP

under the Union Council # 14 and having its catchment population 14175. This Feeder is in the urban area of the Peshawar city emanating from the city Grid Station. Total No of Consumers on the Feeder are 1028. The area mainly consists of Residential and commercial set ups with streets. The Major professions of the peoples are local small level business, shop keepers, Government and private employment, daily wagers (Masons, carpenters, black smith, cobblers). The law-and-order situation in the Right of Way of the feeder is Normal (No such civil unrest activities reported).



### 3. **Division:** City Rural

**S/Division:** Faqir Abad

**Feeder:** Zaryab

Faqeerabad also spelled as Faqirabad, is a neighbourhood of Peshawar, Khyber Pakhtunkhwa, Pakistan. Hashtnagri is located to the south while Charsadda Road is located to the west, all the way up to the northern end of Faqeerabad. Faqeerabad is part of Pakistan National Assembly seat NA-31 (Peshawar-V) while for KP Provincial Assembly it is part of PF-1 (Peshawar-1) This Feeder is in the urban area of the Peshawar city emanating from the 132 KV City Grid Station. Total No of Consumers on the Feeder are 4393. The area mainly consists of Residential and commercial set ups with streets. The Major professions of the peoples are Rikshaw show rooms, Private tuition centers, local small level business, shop keepers, Government and private employment, daily

wagers(Masons, carpenters, black smith, cobblers). The law and order situation in the Right of Way of the feeder is Normal (No such civil unrest activities reported).



4. **Division:** City Rural

**S/Division:** Rehman Baba

**Feeder:** Phando Baba

Phandu Baba area is situated nearby to Phando Bala and Choha Gujar 4-5 Kilometer from main ring road Peshawar. This Feeder is in the suburb's city rural emanating from the 132 KV Rehman Baba Grid Station. Total No of Consumers on the Feeder are 1333. The area is mainly semi-rural Residential with streets. The Major professions of the peoples are local small scale business, shop keepers, Government and private employment, daily wagers(Masons, carpenters, black smith, cobblers), limited agriculture activities. The law-and-order situation in the Right of Way of the feeder is Normal (No such civil unrest activities reported).





5. **Division:** City Rural

**S/Division:** Rehman Baba

**Feeder:** Baghbanan

This Feeder is in the suburb's city rural emanating from 132 KV Peshawar City. Total No of Consumers on the Feeder are 3687. The area is mainly semi-rural Residential with streets. The Major professions of the peoples are local small scale business, shop keepers, Government and private employment, daily wagers(Masons, carpenters, black smith, cobblers), limited agriculture activities. The law and order situation in the Right of Way of the feeder is Normal (No such civil unrest activities reported).



6. **Division:** City Rural

**S/Division:** Lala

**Feeder:** Wadpaga 1

Wadpaga is located on main dalazak road a small village having semi rural characteristics. This Feeder is in the suburb's city rural emanating from 132 KV Dalazak. Total No of Consumers on the Feeder are 4585. The area is mainly semi-rural Residential with streets. The major sources of livelihood are agriculture, daily wagers Government servants. The law-and-order situation in the Right of Way of the feeder is Normal (No civil unrest activities reported).

7. **Division:** City Rural

**S/Division:** Lala

**Feeder:** Wadpaga 2

This Feeder is in the suburb's city rural emanating from 132 KV Dalazak Grid station. Total No of Consumers on the Feeder are 3641. The area is mainly semi-rural residential with streets. The major sources of livelihood are agriculture, daily wagers Government servants. The law-and-order situation in the Right of Way of the feeder is normal (no civil unrest activities reported).



8. **Division:** City Rural

**S/Division:** Lala

**Feeder:** Lala

This Feeder is in the suburb's city rural emanating from 132 KV Grid station Peshawar city. Total No of Consumers on the Feeder are 2925. The area is mainly semi-rural Residential with streets. The major sources of livelihood are agriculture, daily wagers Government servants. The law and order situation in the Right of Way of the feeder is Normal (No such civil unrest activities reported).





9. **Division:** City Rural

**S/Division:** Sethi Town

**Feeder:** Pakha Ghulam

Sethi Town is a neighborhood Peshawar, Pakistan located in the east of historic Peshawar city. This Feeder is in the urban Peshawar emanating from 132 KV Grid Station Peshawar City. Total No of Consumers on the Feeder are 4693. The area is mainly semi-rural Residential with streets. The major sources of livelihood are agriculture, daily wagers Government servants. The law-and-order situation in the Right of Way of the feeder is Normal (No such civil unrest activities reported).



10. **Division:** City Rural

**S/Division:** Sethi Town

**Feeder:** Gulabad

Sethi Town is a neighborhood in Haji Camp, Peshawar, Pakistan located in the east of historic Peshawar city near Haji Camp Bus Terminal of Peshawar. Total No of Consumers on the Feeder are 3855. The area is mainly urban Residential set ups with streets. The major sources of income include Groceries stores, Government servants and private employees, small scale business (hardware shops). The law-and-order situation in the Right of Way of the feeder is Normal (No such civil unrest activities reported).



**11. Division:** City Rural

**S/Division:** Sethi Town

**Feeder:** Sethi Town

Sethi Town is a neighborhood in Haji Camp, Peshawar, Pakistan located in the east of historic Peshawar city near Haji Camp Bus Terminal of Peshawar. Total No of Consumers on the Feeder are 5129. This feeder is emanating from 132 KV Grid station Peshawar city. The area is mainly comprised of urban Residential set ups with streets. The major sources of income includes Groceries stores, Government servants and private employees, small scale business (hardware shops). The law-and-order situation in the Right of Way of the feeder is Normal (No such civil unrest activities reported)





12. **Division:** City Rural

**S/Division:** Sethi Town

**Feeder:** Sar biland pura

The Sarbiland pura is located on the main ring road Peshawar near to Sethi town the Feeder is emanating from 132 KV Shahi Bagh Grid Station. Total No of Consumers on the Feeder are 2702. The area is mainly comprised of urban Residential set ups with streets. The major sources of income includes Groceries stores, Government servants and private employees, small scale business (hardware shops). The law-and-order situation in the Right of Way of the feeder is Normal (No such civil unrest activities reported).



13. **Division:** City Rural

**S/Division:** Sethi Town

**Feeder:** Dalazak

Dalazak is semi-rural area located about 5-6 Kilometer from main ring road. The feeder is emanating from 132 KV Shai bagh Grid station. Total No of Consumers on the Feeder are 5191. The area is mainly comprised of urban Residential and commercial set ups with streets. The major sources of income of the peoples includes agriculture, Groceries stores, Government servants and private employees, small scale business ((hardware shops, cement shop, wedding halls, private schools, hardware shops). The law-and-order situation in the Right of Way of the feeder is Normal (No such civil unrest activities reported).





**14. Division:** City Rural

**S/Division:** Rashid Garhi

**Feeder:** Rashid Garhi

Total No of Consumers on the Feeder are 5533. The area is mainly comprised of urban Residential and commercial set ups with streets. The major income generating sources are local business, shop keeping, tailor shops, shoes shop, cloth houses, groceries shops, Government and private employees (associated with pharma, sales men, real estates, petrol pumps, warehouses, private hospitals NGOs). The law-and-order situation in the Right of Way of the feeder is Normal (No such civil unrest activities reported).



**15. Division:** City Rural

**S/Division:** Phando

**Feeder:** Chairman Daftar

Total No of Consumers on the Feeder are 3956. The area is mainly comprised of urban Residential and commercial set ups with streets. The major income generating sources are local business, shop keeping, tailor shops, shoes shop, cloth houses, groceries shops, Government and private

employees (associated with pharma, sales men, real estates, petrol pumps, warehouses, private hospitals NGOs). The law-and-order situation in the Right of Way of the feeder is Normal (No such civil unrest activities reported).



## 16. Division: Cantt

S/Division: University-I

Feeder: Malkandher

Total number of consumers on the feeder are 4458. The area is mainly Semi rural residential set ups. The major income generating sources are local business, shop keeping, tailor shops, shoes shop, cloth houses, groceries shops, Government and private employees (associated with pharma, sales men, real estates, petrol pumps, warehouses, private hospitals NGOs. The law and order situation is Normal (No such civil unrest activities reported )



### 17. S/Division: University-II

Feeder Name: G.abad

The total number of consumers on the feeder are 4497. The area mainly consists of urban residential set ups. The major income generating sources are local business, shop keeping, tailor



shops, shoes shop, cloth houses, groceries shops, Government and private employees (associated with pharma, sales men, real estates, petrol pumps, warehouses, private hospitals NGOs). The law and order situation in area is Normal (No such civil unrest activities reported )



## 18. S/Division:University-II

Feeder: Rahatabad

The total number of consumers are 2673. The area is comprised of urban residential set ups. The major income generating sources are local business, shop keeping, tailor shops, shoes shop, cloth houses, groceries shops, Government and private employees (associated with pharma, sales men, real estates, petrol pumps, warehouses, private hospitals NGOs). The law and order situation is Normal (No such civil unrest activities reported )



#### 19. S/Division:

Kohat road

Feeder Name: Kohat Road

The total number of consumers are 2734. The area is comprised of Urban residential set ups with commercial markets The major income generating sources are local business, shop keeping, tailor shops, shoes shop, cloth houses, groceries shops, Government and private employees (associated with pharma, sales men, real estates, petrol pumps, warehouses, private hospitals NGOs). the law and order situation is Normal (No such civil unrest activities reported )



## 20. S/Division: Kohat road

**Feeder Name:** New kohat road

The total number of consumers are 2935. The area is comprised of Semi-rural residential set ups with pockets of agri-land. The major occupations are Brick kiln, agriculture, pottery and transportation, Government + private employment. The law and order situation is Normal (No such civil unrest activities reported )



## 21. Division: Charsadda

S/Division: Charsadda

**Feeder:** Charsadda-IV

The total number of consumers are 6049. The area is comprised of rural residential set ups with pockets of agri-land. The major occupations are Government and Private employment and agriculture local traditional cloth industry hand and machine based(Famous Charsaddah khaddar) Charsaddah sweets (Famous Rajar sweets), Charsaddah Famous meat rice(Mota chawal) Charsaddah Famous Chappal. The law and order situation is Normal (No such civil unrest activities reported ).



## 22. S/Division: Charsadda

**Feeder:** Charsadda-1

The total number of consumers are 5203. The area is mainly rural and residential with pockets of agri-land. The major occupations are Government and Private employment and agriculture local traditional cloth industry hand and machine based(Famous Charsaddah khaddar) Charsaddah sweets (Famous Rajar sweets), Charsaddah Famous meat rice(Mota chawal) Charsaddah Famous chappal. The law and order situation is Normal (No such civil unrest activities reported )





### 23. S/Division: Charsadda

#### **Feeder:** Charsadda-3

The total number of consumers are 4177. The area is mainly rural and residential with pockets of agri-land. The major occupations are Government and Private employment and agriculture local traditional cloth industry hand and machine based(Famous Charsaddah khaddar) Charsaddah sweets (Famous Rajar sweets), Charsaddah Famous meat rice(Mota chawal) Charsaddah Famous Chappal. The law and order situation is Normal (No such civil unrest activities reported )



#### 24. S/Division: Sardheri

**Feeder:** Dargai

The total number of consumers are 4891.

The feeder area is mainly rural residential with pockets of agri-land. The major occupations are Government and Private employment and agriculture local traditional cloth industry hand and machine based(Famous Charsaddah khaddar) Charsaddah sweets (Famous Rajar sweets), Charsaddah Famous meat rice(Mota chawal)the law and order situation is Normal (No such civil unrest activities reported )



#### 25. S/Divion:Sardheri

**Feeder:** Sardheri

The total number of consumer are 5524.

The area is mainly rural and residential with pockets of agri-land.The major occupations are Government and Private employment and agriculture local traditional cloth industry hand and machine based(Famous Charsaddah khaddar) Charsaddah sweets (Famous Rajar sweets), Charsaddah Famous meat rice(Mota chawal) the law and order situation is Normal (No such civil unrest activities reported )



**26. S/Division:Utmanzai**

**Feeder:** Rajjar. the total number of consumer are 5781. The area is mainly rural and residential with pockets of agri-land. The major occupations are Government and Private employment and agriculture local traditional cloth industry hand and machine based(Famous Charsaddah khaddar) Charsaddah sweets (Famous Rajar sweets), Charsaddah Famous meat rice(Mota chawal). The law and order situation is Normal (No such civil unrest activities reported )



**27. S/Division :Nisatta (Rural)**

**Feeder: Prang.** The total number of consumers are 4251. The area is mainly rural and residential with pockets of agri-land. The major occupations are Government and Private employment and agriculture local traditional cloth industry hand and machine based (Famous Charsaddah khaddar) Charsaddah sweets (Famous Rajar sweets), Charsaddah Famous meat rice (Mota chawal). The law and order situation is Normal (No such civil unrest activities reported )





**28. S/Division:Shabqadar**

**Feeder: Tangi Barazai.** The total number of consumers are 5276. The area is mainly Rural and residential .The major occupations are Government and Private employment and agriculture local traditional cloth industry hand and machine based(Famous Charsaddah khaddar) Charsaddah sweets (Famous Rajar sweets), Charsaddah Famous meat rice(Mota chawal). The law and order situation is Normal (No such civil unrest activities reported )



**29. S/Division:Tangi**

**Feeder Name: Tangi Nusratzai.** The total number of consumer are 3955. The area is mainly rural and residential with pockets of agri-land

The major occupations are Government and Private employment and agriculture, local traditional cloth industry hand and machine based(Famous Charsaddah khaddar) Charsaddah sweets (Famous Rajar sweets), Charsaddah Famous meat rice(Mota chawal). The law and order situation is Normal (No such civil unrest activities reported).



**30. S/Division:Matta**

**Feeder: Katozai-2.** The total number of consumer are 1529. The area is mainly rural and residential set ups with pockets of agri-land. The major income sources are agriculture (Cash Crops are sugar cane, strawberry, tomatoes, Poplar trade, sweet melon, jaggery, the law and order situation is Normal (No such civil unrest activities reported )



### 31. S/Division: Matta

Feeder: Moran Koruna.

The total number of consumer are 1759. The area is mainly rural and residential with pockets of agri-land. The major livelihood sources are Poplar trade (Match industry), agriculture, Government and private employees, honey bee keeping, Fish huts, poultry farms, the law and order situation is Normal (No such civil unrest activities reported )



### 32. S/Division: Doaba

Feeder: Pir Qilla. The total number of consumers are 4035. The area is mainly rural and residential with pockets of agri-land. The major livelihood sources are Poplar trade (Match industry), agriculture, Government and private employees, honey bee keeping, Fish huts, poultry farms,. The law and order situation is Normal (No such civil unrest activities reported )



### 33. S/Division: Shabqadar

**Feeder: Shabqadar Fort.** The total number of consumers are 3206. The area is mainly rural and residential with pockets of agri-land. The major livelihood sources are Poplar trade (Match industry), agriculture, Government and private employees, honey bee keeping, Fish huts, poultry farms, mangoes export quality, block factories, Marble factories, Plastic PVC pipe industry, small scale local business, commercial markets.. the law and order situation is Normal (No such civil unrest activities reported )





**34. S/Division: Rural Warsak-I**

**Feeder: Mathra-I.** The total number of consumers are 2687. The area is mainly rural and residential with pockets of agri-land. The major sources of income are real estate, marble industry, agriculture, private school, private health facilities, government and private employment, local transportation . the law and order situation is Normal (No such civil unrest activities reported )



**35. S/Division: Daud zai**

**Feeder: Nishat-I.** the total number of consumers are 4609. The area is mainly rural and residential with pockets of agri-land. The major sources of income are real estate, agriculture, private school, Fish huts, government and private employment, local transportation, the law and order situation is Normal (No such civil unrest activities reported )



**36. S/Division: Daud zai**

**Feeder: Nishat-II.**

The total number of consumers are 2315. The area is mainly rural residential set ups with pockets of agri-land. The major sources of income are real estate, agriculture, private school, Fish huts, government and private employment, local transportation, the law and order situation is Normal (No such civil unrest activities reported ) the law and order situation in the area is Normal (No such civil unrest activities reported )



**37. S/Division: Gulbela**

**Feeder: Daud zai-I.** The total number of consumers are 6070. The area is mainly rural residential set ups with pockets of agri-land. The major sources of income are real estate, agriculture, private school, Fish huts, government and private employment, local transportation, the law and order situation is Normal (No such civil unrest activities reported )



**38. S/Division: Gulbela**

**Feeder: Khazana-2.** The total number of consumers are 5755. The area is mainly rural residential set ups with pockets of agri-land. The major sources of income are real estate, agriculture, private school, Fish huts, government and private employment, local transportation, the law and order situation is Normal (No such civil unrest activities reported )





**39. S/Division: Gulbela**

**Feeder: Khazana.** The total number of consumers are 3428. The area is mainly rural residential set ups with pockets of agri-land. The major sources of income are real estate, agriculture, private school, Fish huts, government and private employment, local transportation, Famous Khazana sugar mill, local woof furniture industry, commercial markets. the law and order situation is Normal (No such civil unrest activities reported )



**40. S/Division: Warsak-II**

**Feeder: Kaniza.** The total number of consumers are 2195. The area is mainly rural residential set ups with pockets of agri-land. The major livelihood sources are agriculture, Government



employment, local shop keepers, the law and order situation is Normal (No such civil unrest activities reported )

**41. S/Division: Warsak-II**

**Feeder: Regi** The total number of consumers are 1579. The area is mainly rural residential set ups with pockets of agri-land The major livelihood sources are agriculture, Government and private employment, local shop keepers, the law and order situation is Normal (No such civil unrest activities reported )

**42. S/Division: Warsak-II**

**Feeder: Pajagi** The total number of consumers are 4983. The area is mainly rural residential set ups with pockets of agri-land The major livelihood sources are agriculture, Government and private employment, local shop keepers, the law and order situation is Normal (No such civil unrest activities reported )



**43. S/Division: Naguman**

**Feeder: Daudzai-II.** The total number of consumers are 4866. The area is mainly rural residential set ups with pockets of agri-land. The major livelihood sources are agriculture, Government and private employment, local shop keepers, the law and order situation is Normal (No such civil unrest activities reported )



**44. Division: Khyber**

**S/Division: Bahadar**

**Feeder: Sheikhan.** The total number of consumers are 1666. The area is mainly rural residential set ups with pockets of agri-land The major livelihood sources are agriculture, Government and private employment, local shop keepers, the law and order situation is Normal (No such civil unrest activities reported )



**45. S/Division: NSR City No. 2**

**Feeder: Pabbi-III P.S.O.**

The total number of consumers are 4395. The area is mainly rural residential set ups with pockets of agri-land The major livelihood sources are agriculture, Government and private employment,

local shop keepers, nurseries forms, azakhel botanical garden, commercial market, private school and colleges, fuel wood business, Cherat cement factory , real estate business. The law and order situation is Normal (No such civil unrest activities reported )



**46. S/Division: Pabbi-III**

Feeder: Taru Jabba. The total number of consumers are 4031. The area is mainly rural residential set ups with pockets of agri-land      The major income sources are agriculture, Taru main oil depot, Taru famous chappli kabab eatery, Fish huts, heavy vehicle workshops, Government and private employment, NIFA (Nuclear institute of Food and agriculture).The law and order situation is Normal (No such civil unrest activities reported )



**47. S/Division: Pabbi-III**

Feeder: Akbar Pura. The total number of consumers are 5309. The area is mainly rural residential set ups with pockets of agri-land. The major income sources are agriculture, Fish huts, commercial markets, Government and private employment. The law and order situation is Normal (No such civil unrest activities reported )



**48. S/Division: Pabbi-III**

Feeder: Tarnab. The total number of consumers are 4474. The area is mainly rural residential set ups with pockets of agri-land. The major income sources are agriculture, Fish huts, Government and private employment,

Plants Nurseries forms. the law and order situation is Normal (No such civil unrest activities reported ).



**49. S/Division: Pabbi-III**

Feeder: Scarp- I. The total number of consumers are 4285. The area is mainly rural residential set ups with pockets of agri-land The major income sources are agriculture, Fish huts, Government and private employment,

Plants Nurseries forms. the law and order situation is Normal (No such civil unrest activities reported )





#### 50. S/Division: Kotal Town

Feeder: Eid Gah Kohat . The total number of consumers are 1158. The area is mainly rural residential. The major sources of livelihood are transportation, oversees Pakistani (Gulf countries), Government and Private employment, local small business, Poultry and local breeds of cattle are also good source of income for the people of Kohat. The law and order situation is Normal (No such civil unrest activities reported )



51. **S/Division:** Kohat Rural

**Feeder:** Rural Hangu Road. The total number of consumers are 4220. The area is mainly comprised of Rural mountainous residential set up with barren land. The major sources of livelihood are transportation, oversees Pakistani(Gulf countries), Government and Private employment, local small business, Poultry and local breeds of cattle are also good source of income for the people of Kohat .The law and order situation is Normal (No such civil unrest activities reported )



52. **S/Division:** Rural

**Feeder:** Alizai-1. The total number of consumers are 3431. The area is mainly comprised of Located on main road non productive rain fed fields few pockets of Guava orchards. The major sources of livelihood are transportation, oversees Pakistani(Gulf countries), Government and Private employment, local small business. Horticulture (Guava export quality), Poultry and local breeds of cattle are also good source of income for the people of Kohat .The law and order situation is Normal (No such civil unrest activities reported )



53. **S/Division:** Rural

**Feeder:** Alizai-2. The total number of consumers are 2613. The area is mainly comprised of Located on main road non productive rain fed fields few pockets of Guava orchards. The major sources of livelihood are transportation, oversees Pakistani(Gulf countries), Government and Private employment, local small business. Horticulture(Guava export quality), Poultry and local breeds of cattle are also good source of income for the people of Kohat .The law and order situation is Normal (No such civil unrest activities reported )





54. S/Division: Rural

**Feeder:** Barh The total number of consumers are 3705. The area is mainly comprised of Village type residential set up mostly barren land The major sources of livelihood are transportation, oversees Pakistani(Gulf countries), Government and Private employment, local small business, Poultry and local breeds of cattle are also good source of income for the people of Kohat The law and order situation is Normal (No such civil unrest activities reported )



55. **S/Division:** Rural

**Feeder:** O.T.S The total number of consumers are 4071. The area is mainly comprised of Urban city type area with streets. The major sources of livelihood are transportation, oversees Pakistani(Gulf countries), Government and Private employment, local small business, Poultry and local breeds of cattle are also good source of income for the people of Kohat. The law and order situation is Normal (No such civil unrest activities reported )



56. **S/Division:** Rural

**Feeder:** Gamgol Sharif. The total number of consumers are 1900. The area is mainly comprised of Urban + rural set ups with pocket agri-land. The major sources of livelihood are transportation, oversees Pakistani(Gulf countries), Government and Private employment, local small business. Horticulture(Guava export quality), Poultry and local breeds of cattle are also good source of income for the people of Kohat .The law and order situation is Normal (No such civil unrest activities reported )





**57. S/Division:** Kohat Urban-II

**Feeder:** City-4

The total number of consumers are 4493. The area is mainly comprised of Main city commercial + residential. The major sources of livelihood are transportation, overseas Pakistani (Gulf countries), Government and Private employment, local small business, Poultry and local breeds of cattle are also good source of income for the people of Kohat. The law and order situation is Normal (No such civil unrest activities reported )



58. **S/Division:** Kohat Urban-II

**Feeder:** S. Factory

The total number of consumers are 5265. The area is mainly comprised of Semi- urban residential set up The major sources of livelihood are transportation, oversees Pakistani(Gulf countries), Government and Private employment, local small business, Poultry and local breeds of cattle are also good source of income for the people of Kohat. The law and order situation is Normal (No such civil unrest activities reported )



59. **S/Division:** Kohat Urban-II

**Feeder:** Tappi The total number of consumers are 2844. The area is mainly comprised of Complete rural residential set up rain fed area The major sources of livelihood are transportation, oversees Pakistani(Gulf countries), Government and Private employment, local small business, Poultry and local breeds of cattle are also good source of income for the people of Kohat. The law and order situation is Normal (No such civil unrest activities reported )



**60. S/Division: Kohat Urban-II**

**Feeder: Jarma.** The total number of employees are 2385. The area is mainly comprised of Complete rural residential set up rain fed area. The major sources of livelihood are transportation, oversees Pakistani(Gulf countries), Government and Private employment, local small business, Poultry and local breeds of cattle are also good source of income for the people of Kohat. The law and order situation is Normal (No such civil unrest activities reported )



**Chapter No.04****RISK ASSESMENT AND MITIGATION**

This chapter depicts the risk Assessment and Mitigation. Screening of Feeders for ABC Cabling is carried out meticulously, resultant the instant Risk Assessment is executed, the following table furnished, enlightening Potential Risk, Mitigation actions and monitoring responsibility. The proposed 11 KV feeders for ABC Cable under EDEIP fall in the area of mild resistance from the consumers. In these areas the people don't challenge the writ of the department, so they usually used hooks during nighttime when there is no patrolling on the live line/feeder. Planning directorate PESCO has already completed 500 KM ABC Cabling in the worst area. the resistance from consumers was addressed through the involvement of elders and influentials of the area, also representative from local Government and District administration.

The ABC Cable has been designed with the following main features / qualities:

1. It ensures safety.
2. Reliability
3. Aesthetics
4. Risk assessment has been carried out, the expected potential Risks are identified, mitigation measures relevant to the potential risks are proposed along with the execution and monitoring responsibilities in the following table.

| <b>Potential Risk</b>                             | <b>Mitigation Actions</b>  | <b>Responsible</b>  | <b>Monitoring Responsibility</b> |
|---|--|---|----------------------------------|
| Conflicts/resistance from project area community. | Potential conflicts between local communities and the executing agency will be resolve by involving community leaders influentials of the area and District Government. Regular consultations will be carried out with the relevant consumers and other community members. | Construction Contractor/<br>PIMSC;<br>E&S Team                          | E& S team PMU<br>PESCO           |
| Outage of electricity during construction works   | Minimum 3 hours and maximum 5 hours Outage of electricity during construction works is expected. Proper electricity shut down permit will obtained and will be announced publicly through face book, press. Community liaison will be maintained.                          | Construction Contractor/<br>PIMSC;<br>Concerned Division<br>/S/Division | E& S team PMU<br>PESCO           |



## Installation testing and Commissioning of ABC Cable

| Potential Risk   | Mitigation Actions   | Responsible                       | Monitoring Responsibility |
|--|--|-----------------------------------|---------------------------|
| Construction worker occupational health and safety (OHS) | <p>The contractor will prepare an Occupational Health and Safety Management Plan (OHSMP), have it approved by PIU, and implement it during the construction works. The OHSMP will comply with the PESCO Safety Code, and other applicable codes and guidelines.</p> <p>Only qualified and trained workers will be employed by the contractors.</p> <p>Contractor will arrange regular OHS training for the workers.</p> <p>All construction workers will ensure to execute work after obtaining proper Permit to work and use of PPE.</p> <p>All workers will be provided with appropriate PPE including insulating gloves, hard hats and safety boots.</p> <p>All labour laws and regulations of Pakistan like Payment of Minimum Wage, Overtime Payment, Hours of Work, Child Labor will be strictly implemented.</p> <p>WB EHS Guidelines for Electricity Transmission and Distribution and General EHS Guidelines: Occupational Health and Safety will be strictly implemented.</p> <p>Worker working with electrical equipment or in situations where electrocution is a risk, will be provided with insulated gloves and other relevant personal protective equipment.</p> <p>ESMF, LMP and SEP will be implemented.</p> | Construction Contractor/<br>PIMSC | E& S team PMU<br>PESCO    |



## Installation testing and Commissioning of ABC Cable

| Potential Risk  | Mitigation Actions   | Responsible                       | Monitoring Responsibility |
|---|--|-----------------------------------|---------------------------|
| Community health and safety                                     | <p>The OHSMP mentioned earlier will include precautions and measures for safety of communities</p> <p>Barricading of work areas will be carried out where appropriate/possible.</p> <p>Community awareness will be raised for the safety risks associated with the works and how to avoid the risks. Safety signs will be installed where practical.</p> <p>The Contractor's workers shall follow the code of conduct to avoid and minimise disruption and harm to community.</p> <p>The Contractor shall provide details of how to make a complaint in a prominent place.</p> | Construction Contractor/<br>PIMSC | E& S team PMU<br>PESCO    |
| Complaints from the neighbors and local community               | <p>Proper Full fledge GRM will be implemented at each Project site, Maximum efforts will be made to avert any issue to happen. In case of a complaint proper mechanism will be established at each project site to register complaints and its solution well in time through GRC.</p>  | Construction Contractor/<br>PIMSC | E& S team PMU<br>PESCO    |
| Privacy of women/local population                               | <p>The contractor will prepare a proper code of conduct for the contractor staff in order to ensure the Privacy of women/local population</p> <p>Training will be provided to workers regarding code of conduct and social norms in the area</p> <p>Liaison will be maintained with the local community before and during field activities.</p>  | Construction Contractor/<br>PIMSC | E& S team PMU<br>PESCO    |
| Gender issues including sexual exploitation and abuse (SEA) and | <p>The GRM will be made transparent and Gender-responsive to cover Gender issues including SEA/SH risks</p>  | Construction Contractor/<br>PIMSC | E& S team PMU<br>PESCO    |

## Installation testing and Commissioning of ABC Cable

| Potential Risk               | Mitigation Actions   | Responsible                       | Monitoring Responsibility |
|------------------------------|--|-----------------------------------|---------------------------|
| sexual harassment (SH) risks | Training and awareness raising will be provided to workers regarding gender issues particularly on SEA/SH risks.                             |                                   |                           |
| Waste disposal               | A proper waste disposal mechanism will be established for the collection storage and final appropriate disposal of waste.                    | Construction Contractor/<br>PIMSC | E& S team PMU<br>PESCO    |
| Traffic management           | Traffic management plans shall be used to manage any heavy traffic, large vehicles or other potential risks to road users and the community. | Construction Contractor/<br>PIMSC | E& S team PMU<br>PESCO    |
| Labor issues                 | LMP will be followed.  | Contractors                       |                           |

## Chapter No.05

### Public Consultation

#### Public consultation

The following consultations were carried out as an ongoing process of consultation to get their views and comments about the ABC Cabling in the area and to consider their inputs, suggestion and recommendation in the proposed package.

| Stakeholder  | Points of Discussion and Concerns Raised  | Response from Disco  | Consultation Date, and DISCO Responsible |
|--|---|--|--|
| 1. Urmer Feeder<br>SUB Division<br>Name: Rehman<br>Baba                                    | Regarding the safety of staff and general public, the respondents said that PPEs are provided to them, they also added that before commencement of work on lines the influentials of the area are taken into confidence to avoid any public nuisance.   | The PESCO Staff were specifically asked about ABC cables and listed the following benefits of using ABC cables:  | 28/01.2021-<br>PESCO                     |
| 2. Mirza dher and<br>3. Sherpao<br>Feeders,<br>4. Umerzai                                  | <b>Feedback from PESCO Consumers (General public):</b><br><br>During consultation with the general public particularly, the paying consumers highly appreciated the proposed scheme as they are facing more than 18 hours load shedding in the area. They also hoped that it also addresses the issues of overbilling due to hooks and electricity theft. As the consultation took place with diversified group of peoples, so many of them especially commercial consumer added that bare conductor had caused short circuit in the markets and burned their | <ul style="list-style-type: none"> <li>• ABC cable will eliminate fatal and non-fatal incidents</li> <li>• it will also eliminate the damages to distribution transformers caused by hooks,</li> <li>• The insulated cable will restore aesthetic beauty of the area.</li> <li>• , It will address issues of short circuits.</li> </ul> <p>The cable on one hand will reduce the</p> | 27/01/2021-<br>PESCO                     |
| 5. Akhune Abad<br>Feeder,<br>6. Rasheed<br>Garhi<br>7. Tangi Mira and<br>8. Abazai Feeders |   |  | 28/01/2021-<br>PESCO                     |
|  |   |  | 27/01/2021-<br>PESCO                     |

| Stakeholder  | Points of Discussion and Concerns Raised   | Response from Disco  | Consultation Date, and DISCO Responsible |
|--|--|--|--|
|  | valuable assets and shops and affected their livelihood.   | <p>maintenance cost for PESCO and on other hand will eliminate cost on general public for shifting of these lines during construction of their houses etc.</p> <ul style="list-style-type: none"> <li>• Further, during raids when the culprits are caught red handed, it led to a conflict due to stigmatization in society, so the proposed project will strengthen the weakened ties between PESCO and general public.</li> </ul> |  |
| 9. Baghbanan (Kichori) Feeder (Rehman Baba Sub-Division) | <p>During consultation with general public the following questions were asked,</p> <ol style="list-style-type: none"> <li>1. Whether during installation of ABC did you faced any unrest from PESCO.</li> <li>2. Whether your social and cultural norms are affected.</li> <li>3. Whether your trees crops drains or any assets are affected.</li> </ol> | <p>PESCO team assure the locals that your request for the establishment of complaint office will be forwarded to the quarter concerned for implementation, further PESCO team clarified the purpose of the visit that, PESCO is going extend the same project activities to the nearby</p>   | 03.03.2023                               |

| Stakeholder | Points of Discussion and Concerns Raised  | Response from Disco  | Consultation Date, and DISCO Responsible |
|-------------|---|--|--|
|             | <p>4. Any conflict between the parties i.e. general public and PESCO happened.</p> <p>5. Any OHS issue (fatal non-fatal reported during the implementation or installation of the ABC cable.</p> <p>6. Any other issue or comment.</p> <p><b>Response of the Public:</b></p> <p>1. The General Public added that no such unrest issue happened during installation of ABC Cable.</p> <p>2. Prior to the commencement of installation work our elders were taken on board for the supply and storage of ABC consignment to our village social activist are involved in the project to avoid any untoward situation.</p> <p>3. The locals revealed that, as the line passing through main road and streets therefore no tree trimming, and crops damages reported.</p> <p>4. The locals requested for establishment of complaint office for proper patrolling and attending faults.</p> | <p>villages the aim of this consultation is to get your feedback concerns if any to address in the future endeavors.</p> |  |



**Consultation is to be carried out before the Commencement of Project work at the site.**

| <b>Stakeholders</b> | <b>Mode of Consultation</b>                    | <b>Responsibility</b>                |
|---------------------|--|--------------------------------------|
| Contractors         | Face-to-face consultation at each project site | E&S team PMU, Contractor, Consultant |
| Consultant          | Face-to-face consultation at each project site | E&S team PMU, Contractor, Consultant |
| Community           | Face-to-face consultation at each project site | E&S team PMU, Contractor, Consultant |
| Contractor work     | Face-to-face consultation at each project site | E&S team PMU, Contractor, Consultant |

**Consultation is to be carried out during the ABC Work of the Project at the site.**

| <b>Stakeholders</b>       | <b>Mode of Consultation</b>                    | <b>Responsibility</b>                |
|---------------------------|--|--------------------------------------|
| Contractors               | Face-to-face consultation at each project site | E&S team PMU, Contractor, Consultant |
| Consultant                | Face-to-face consultation at each project site | E&S team PMU, Contractor, Consultant |
| Community                 | Face-to-face consultation at each project site | E&S team PMU, Contractor, Consultant |
| Contractor work<br>Gangue | Face-to-face consultation at each project site | E&S team PMU, Contractor, Consultant |

## Checklist of Likely Environmental and Social Impacts of Subprojects

Name of Subproject: **Replacement of bare conductor with ABC cable**

Number of Subproject: PK-PESCO-292822-CW-RFB

Proposing Agency: **PESCO**

Subproject Location: PESCO Peshawar

Subproject Objective: To improve over all safety(Public + PESCO Staff) and to ensure and improve recovery.

Infrastructure to be rehabilitated:

Estimated Cost: 12.02 M \$ (For the whole Sub Project)

Proposed Date of Commencement of Work: Not yet

Technical Drawing/Specifications Reviewed (circle answer): **No**

**Further Assessment Needs:** The below screening confirms that the proposed sub project has no adverse Environmental and Social Impact on the Project area, so only ESMP is required.

### I. Subproject Related Issues

|           | ISSUES   | None        | Minor/<br>Small | Moderate/<br>Medium | Significant<br>/<br>Large | Mitigation<br>Measures/<br>Remarks   |
|-----------|--|-------------|-----------------|---------------------|---------------------------|--|
| <b>A.</b> | <b>Zoning and Land Use Planning</b>  |             |                 |                     |                           |  |
| 1         | Will the subproject affect land use zoning and planning or conflict with prevalent land use patterns?  | <b>None</b> |                 |                     |                           | No Land will be acquired. No new construction of poles. The existing 11 KV conductor will be replaced with ABC Cable |
| 2         | Will the subproject involve significant land disturbance or site clearance?  | <b>None</b> |                 |                     |                           | Not relevant   |
| 3         | Will the subproject land be subject to potential encroachment by urban or industrial use or located in an area intended for urban or industrial development? | <b>None</b> |                 |                     |                           | Not relevant.  |

## Installation testing and Commissioning of ABC Cable

|          |  |             |       |  |  |  |
|----------|--|-------------|-------|--|--|--|
| <b>B</b> | <b>Utilities and Facilities</b>  |             |       |  |  |  |
| 4        | Will the subproject require the setting up of ancillary facilities?  |             | Minor |  |  | Only replacement of old conductor with new ABC Cable.  |
| 5        | Will the subproject make significant demands on utilities and services?  |             | Minor |  |  | No new poles will be erected.  |
| 6        | Will the subproject require significant levels of accommodation or service amenities to support the workforce during construction (e.g., contractor will need more than 20 workers)? |             | Minor |  |  |  |
| <b>C</b> | <b>Water and Soil Contamination</b>  |             |       |  |  |  |
| 7        | Will the subproject require large amounts of raw materials or construction materials?  | <b>None</b> |       |  |  |  |
| 8        | Will the subproject generate large amounts of residual wastes, construction material waste or cause soil erosion?  |             | Minor |  |  | Only packing materials such as wooden planks, dismantled conductor which are further reutilized. |
| 9        | Will the subproject result in potential soil or water contamination (e.g., from oil, grease and fuel from equipment yards)?  | None        |       |  |  | Only replacement of old conductor with new conductor.  |
| 10       | Will the subproject lead to contamination of ground and surface waters by herbicides for vegetation control and chemicals (e.g., calcium chloride) for dust control?                 | <b>None</b> |       |  |  | Not relevant   |

## Installation testing and Commissioning of ABC Cable

|           |  |             |       |  |  |   |
|-----------|--|-------------|-------|--|--|---|
| 11        | Will the subproject lead to an increase in suspended sediments in streams affected by road cut erosion, decline in water quality and increased sedimentation downstream? | <b>None</b> |       |  |  | No civil works involved.  |
| 12        | Will the subproject involve the use of chemicals or solvents?  | <b>None</b> |       |  |  | Only stringing of ABC Cable.  |
| 13        | Will the subproject lead to the destruction of vegetation and soil in the right-of-way, borrow pits, waste dumps, and equipment yards?                                   |             | Minor |  |  | The proposed schemes is planned on the existing 11 KV line without erection of new poles. |
| 14        | Will the subproject lead to the creation of stagnant water bodies in borrow pits, quarries, etc., encouraging for mosquito breeding and other disease vectors?           |             | Minor |  |  | No erection and excavation is involved.   |
| <b>D.</b> | <b>Noise and Air Pollution<br/>Hazardous Substances</b>  |             |       |  |  |   |
| 15        | Will the subproject increase the levels of harmful air emissions?  |             | Minor |  |  |   |
| 16        | Will the subproject increase ambient noise levels?   |             | Minor |  |  | Noise generating machinery will not be used.  |
| 17        | Will the subproject involve the storage, handling or transport of hazardous substances?  | <b>None</b> |       |  |  | Not relevant  |
| <b>E.</b> | <b>Fauna and Flora</b>   |             |       |  |  |   |
| 18        | Will the subproject involve the disturbance or modification of existing drainage channels (rivers, canals) or surface water bodies (wetlands, marshes)?                  | <b>None</b> |       |  |  | Not relevant  |



|           |  |      |  |  |  |   |
|-----------|--|------|--|--|--|---|
| 19        | Will the subproject lead to the destruction or damage of terrestrial or aquatic ecosystems or endangered species directly or by induced development?                       | None |  |  |  | Not relevant  |
| 20        | Will the subproject lead to the disruption/destruction of wildlife through interruption of migratory routes, disturbance of wildlife habitats, and noise-related problems? | None |  |  |  | Not relevant  |
| <b>F.</b> | <b>Destruction/Disruption of Land and Vegetation</b>   |      |  |  |  |   |
| 21        | Will the subproject lead to unplanned use of the infrastructure being developed?   | None |  |  |  | Not relevant  |
| 22        | Will the subproject lead to long-term or semi-permanent destruction of soils in cleared areas not suited for agriculture?  | None |  |  |  | Not relevant  |
| 23        | Will the subproject lead to the interruption of subsoil and overland drainage patterns (in areas of cuts and fills)?   | None |  |  |  | The new conductor will be used on the existing T/line infrastructure. |
| 24        | Will the subproject lead to landslides, slumps, slips and other mass movements in road cuts?   | None |  |  |  | Not relevant  |
| 25        | Will the subproject lead to erosion of lands receiving concentrated outflow carried by covered or open drains?   | None |  |  |  | Not relevant  |
| 26        | Will the subproject lead to long-term or semi-permanent destruction of soils in cleared areas not suited for agriculture?  | None |  |  |  | Not relevant  |
| 27        | Will the subproject lead to health hazards and interference of plant growth adjacent to roads by dust raised and blown by vehicles?  | None |  |  |  | Not relevant  |
| <b>G.</b> | <b>Cultural Property</b>   |      |  |  |  |   |

## Installation testing and Commissioning of ABC Cable

|           |   |             |       |  |  |  |
|-----------|---|-------------|-------|--|--|--|
| 28        | Will the subproject have an impact on archaeological or historical sites, including historic urban areas?     | <b>None</b> |       |  |  | Not relevant   |
| 29        | Will the subproject have an impact on religious monuments, structures and/or cemeteries?                      | <b>None</b> |       |  |  | Not relevant   |
| 30        | Have Chance Finds procedures been prepared for use in the subproject?   | None        |       |  |  | No remains of archeological importance were found in the past at the Feeder.                                 |
| <b>H.</b> | <b>Expropriation and Social Disturbance</b>   |             |       |  |  |  |
| 31        | Will the subproject involve land expropriation or demolition of existing structures?                          | <b>None</b> |       |  |  | Stringing of new ABC Cable on existing 11 KV Feeder  |
| 32        | Will the subproject lead to induced settlements by workers and others causing social and economic disruption? | <b>None</b> |       |  |  | Not relevant   |
| 33        | Will the subproject lead to environmental and social disturbance by construction camps?                       |             | Minor |  |  | No civil work involved, the proposed activity is restricted to replacement of bare conductor with ABC Cable. |

## II. Site Related Issues

|    | <b>Issues</b>  | <b>Yes</b> | <b>No</b> | <b>Don't Know</b> | <b>Mitigation Measures / Remarks</b> |
|----|--|------------|-----------|-------------------|--------------------------------------|
| 1  | Does the subproject require land acquisition? [Note: Fill in the land acquisition form if YES]   |            | <b>No</b> |                   | Not relevant                         |
| 2  | Will the subproject negatively impact livelihoods [Note: Describe separately if YES]   |            | <b>No</b> |                   | Not relevant                         |
| 3  | Is the sub project located on land with contested ownership?   |            | <b>No</b> |                   | Not relevant                         |
| 4  | Is the sub project located in an area with security problems   |            | <b>No</b> |                   | Not relevant                         |
| 5  | Is the sub projected located on land reclaimed from floods ( the ownership here may be contested)  |            | <b>No</b> |                   | Not relevant                         |
| 6  | Is the subproject located in an area with designated natural reserves?   |            | <b>No</b> |                   | Not relevant                         |
| 7  | Is the subproject located in an area with unique natural features?   |            | <b>No</b> |                   | Residential area                     |
| 8  | Is the subproject located in an area with endangered or conservation-worthy ecosystems, fauna or flora?  |            | <b>No</b> |                   | Not relevant                         |
| 9  | Is the subproject located in an area falling within 500 meters of national forests, protected areas, wilderness areas, wetlands, biodiversity, critical habitats, or sites of historical or cultural importance? |            | <b>No</b> |                   | Not relevant                         |
| 10 | Is the subproject located in an area which would create a barrier for the movement of conservation-worthy wildlife or livestock?   |            | <b>No</b> |                   | Not relevant                         |

|    |   |     |    |  |              |
|----|---|-----|----|--|--------------|
| 11 | Is the subproject located close to groundwater sources, surface water bodies, water courses or wetlands?                            |     | No |  | Not relevant |
| 12 | Is the subproject located in an area with designated cultural properties such as archaeological, historical and/or religious sites? |     | No |  | Not relevant |
| 13 | Is the subproject in an area with religious monuments, structures and/or cemeteries?  |     | No |  | Not relevant |
| 14 | Is the project located in an area from where people have been displaced?  |     | No |  | Not relevant |
| 15 | Is the project located in an area where IDPs are temporarily settled?   |     | No |  | Not relevant |
| 16 | Is the project in a politically sensitive area?   |     | No |  | Not relevant |
| 17 | Is the subproject in a polluted or contaminated area?   |     | No |  | Not relevant |
| 18 | Is the subproject located in an area of high visual and landscape quality?  |     | No |  | Not relevant |
| 19 | Is the subproject located in an area susceptible to landslides or erosion?  |     | No |  | Not relevant |
| 20 | Is the subproject located in an area of seismic faults?   |     | No |  | Not relevant |
| 21 | Is the subproject located in a densely populated area?  | yes |    |  |              |
| 22 | Is the subproject located on prime agricultural land?   |     | No |  | Not relevant |
| 23 | Is the subproject located in an area of tourist importance?   |     | No |  | Not relevant |
| 24 | Is the subproject located near a waste dump?  |     | No |  | Not relevant |



|    |  |      |                 |                     |                           |   |
|----|--|------|-----------------|---------------------|---------------------------|---|
| 25 | Does the subproject have access to potable water?                                    |      | No              |                     | Not relevant              |   |
| 26 | Is the subproject located far (1-2 kms) from accessible roads?                       | Yes  |                 |                     |                           |   |
| 27 | Is the subproject located in an area with a wastewater network?                      |      | No              |                     | Not relevant              |   |
| 28 | Is the subproject located in the urban plan of the city?                             |      | No              |                     |                           |   |
| 29 | Is the subproject located outside the land use plan?                                 | Yes  |                 |                     |                           |   |
| I  | OHS ISSUES   | None | Minor/<br>Small | Moderate/<br>Medium | Significant<br>/<br>Large | Mitigation<br>Measures/Remarks  |
| 1  | Will the subproject lead to the fatal/ non-fatal incident / injuries of the workers? |      | Minor           |                     |                           | Proper PTW is issued by O&M PESCO Peshawar which contains safety guidelines. Main source of power is made disconnected. Availability of PPEs is ensured before start of work. |
| 2  | Will the Subproject pose any threat / Risk to the safety of nearby community?        |      | Minor           |                     |                           | During the course of work only relevant personnel are allowed to the project site. Before execution of work, the inhabitants of the area are taken on board.                  |

| <b>Involuntary Resettlement Impact screening questionnaire.</b>   |            |           |                  |                |
|---|------------|-----------|------------------|----------------|
| <b>Probable IR/IP Impacts</b>   | <b>Yes</b> | <b>No</b> | <b>Not Known</b> | <b>Remarks</b> |
| <b>Involuntary Acquisition of Land and Resettlement Impacts</b>   |            |           |                  |                |
| 1. Will there be land acquisition?  |            | No        |                  |                |
| 2. Is the site for land acquisition and ownership status and current usage of land to be acquired known?  |            |           |                  | N/A            |
| 3. Will easement be utilized within an existing Right of Way (ROW)?   |            | No        |                  |                |
| 4. Will there be loss of shelter and residential land due to land acquisition or due to clearance of existing right of way?   |            | No        |                  | N/A            |
| 5. Will there be loss of agricultural and other productive assets due to land acquisition or due to clearance of existing right of way?   |            | No        |                  | N/A            |
| 6. Will there be losses of crops, trees, and fixed assets due to land acquisition or due to clearance of existing right of way?   |            | No        |                  | N/A            |
| 7. Will there be loss of businesses or enterprises due to land acquisition or due to clearance of existing right of way?  |            | No        |                  | N/A            |
| 8. Will there be loss of income sources and means of livelihoods due to land acquisition or due to clearance of existing right of way?  |            | No        |                  | N/A            |
| 9. Will people lose access to natural resources, communal facilities and services due to involuntary restriction of land use or on access to legally designated parks/protected areas IA? |            | No        |                  |                |
| 10. Will access to land and resources owned communally or by the state be restricted?   |            | No        |                  |                |
| <b>Information on Affected Persons:</b>   |            |           |                  |                |
| Any estimate of the likely number of persons that will be displaced by the Project?<br>If yes, approximately how many? _____  |            |           |                  | No             |
| Are any of them poor, female-heads of households, or vulnerable to poverty risks?   |            |           |                  | No             |
| Are any displaced persons from indigenous or ethnic minority groups?  |            |           |                  | No             |
|   |            |           |                  |                |

## Installation testing and Commissioning of ABC Cable

Signed by Safeguard Focal Person:

\_\_\_\_\_

Title: \_\_\_\_\_

Date: \_\_\_\_\_

Signed by Project Manager:

Name: \_\_\_\_\_

Title: \_\_\_\_\_

Date: \_\_\_\_\_